

News from Halo Design

Danish Design since 1994



**halo
design**

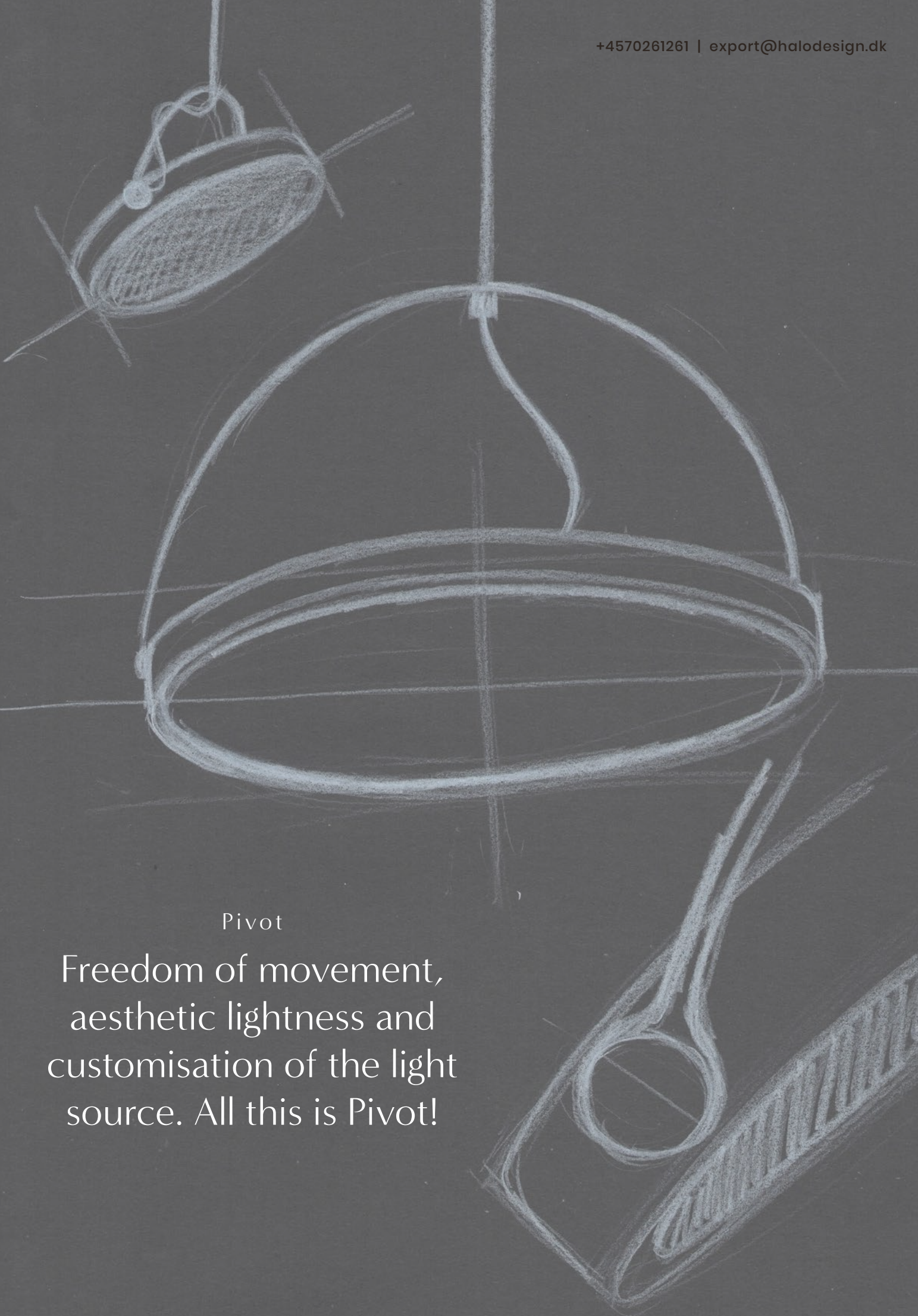
COPENHAGEN

News from Halo Design

Welcome to Pivot!

Pivot is the culmination of a long phase of research and development to achieve a lamp that is elegant, minimalistic and highly functional. The result is a family of unique and flexible pendant lamps that can easily be fitted into any room.





Pivot

Freedom of movement,
aesthetic lightness and
customisation of the light
source. All this is Pivot!



PIVOT

Designed by Emanuele Patton & Michael Waltersdorff



MEMORY FUNCTION

Pivot pendant Ø20

Black/antique brass

Art. 742639

Size: Ø20, H2,7 cm
Material: Metal
Color: Black, antique brass
Socket: Built-in 14W LED
740 lm, 3000 K
Cable: 250cm textile



MEMORY FUNCTION

Pivot pendant Ø40

Black/antique brass

Art. 742691

Size: Ø40, H2,7 cm
Material: Metal
Color: Black, antique brass
Socket: Built-in 22W LED
1630 lm, 3000 K
Cable: 250cm textile

DON'T FORGET
Our classics



DC

DC is a family of lamps with a simple and Scandinavian inspired design, thanks to its round shapes and the combination of metal and oak wood.



OSLO

Oslo is an elegant family of lamps made of metal and oak wood. The combination of the materials gives the lamps a minimalistic and Scandinavian look.



BUBBLES

The result of a deep study of geometry and a wide choice of colors thanks to the combination of different glass and steel element finishes.



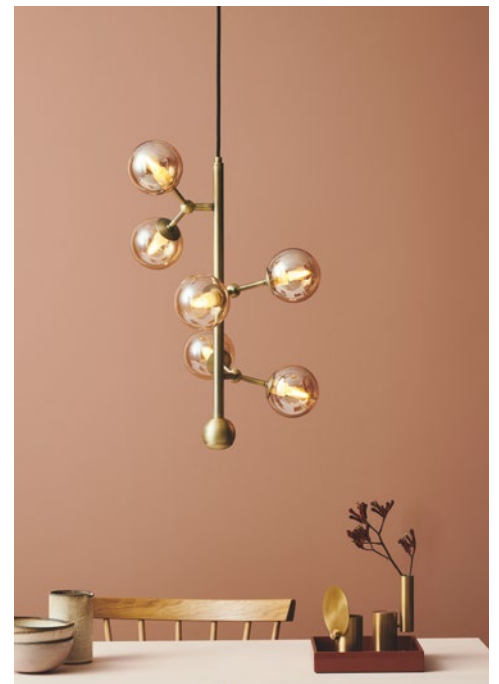
ÅRHUS

The name of this series was inspired by the city of Århus in Denmark, referred to as 'The City of Smiles', featuring a smile shape in the upper part of the metal cover.



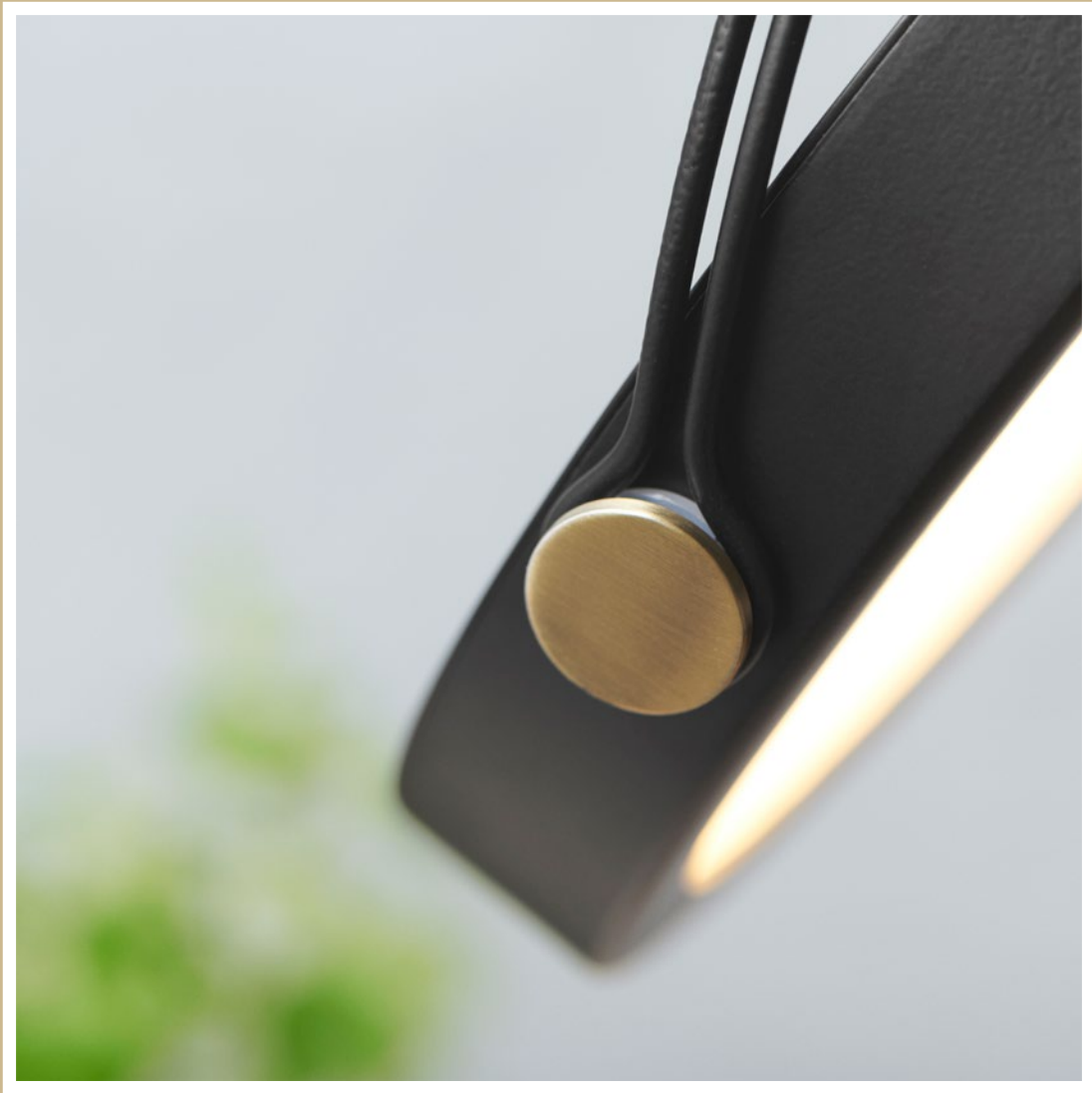
TWIST

High quality materials and classic shapes in a new look. The lamps surprise thanks to the glass ribs and their twisted pattern.



ATOM

A modern chandelier with a clean design and high-quality materials, featuring adjustable arms that allow you to shape it into different forms.



Contact us for
more information, we
can't wait to assist you!

+45 70 261 261
export@halodesign.dk

